

*NATHANIEL  
LLOYD  
RICHARDS*



Crafting Poetry, Curating Stories.

**Electronic Press Kit**

# Content

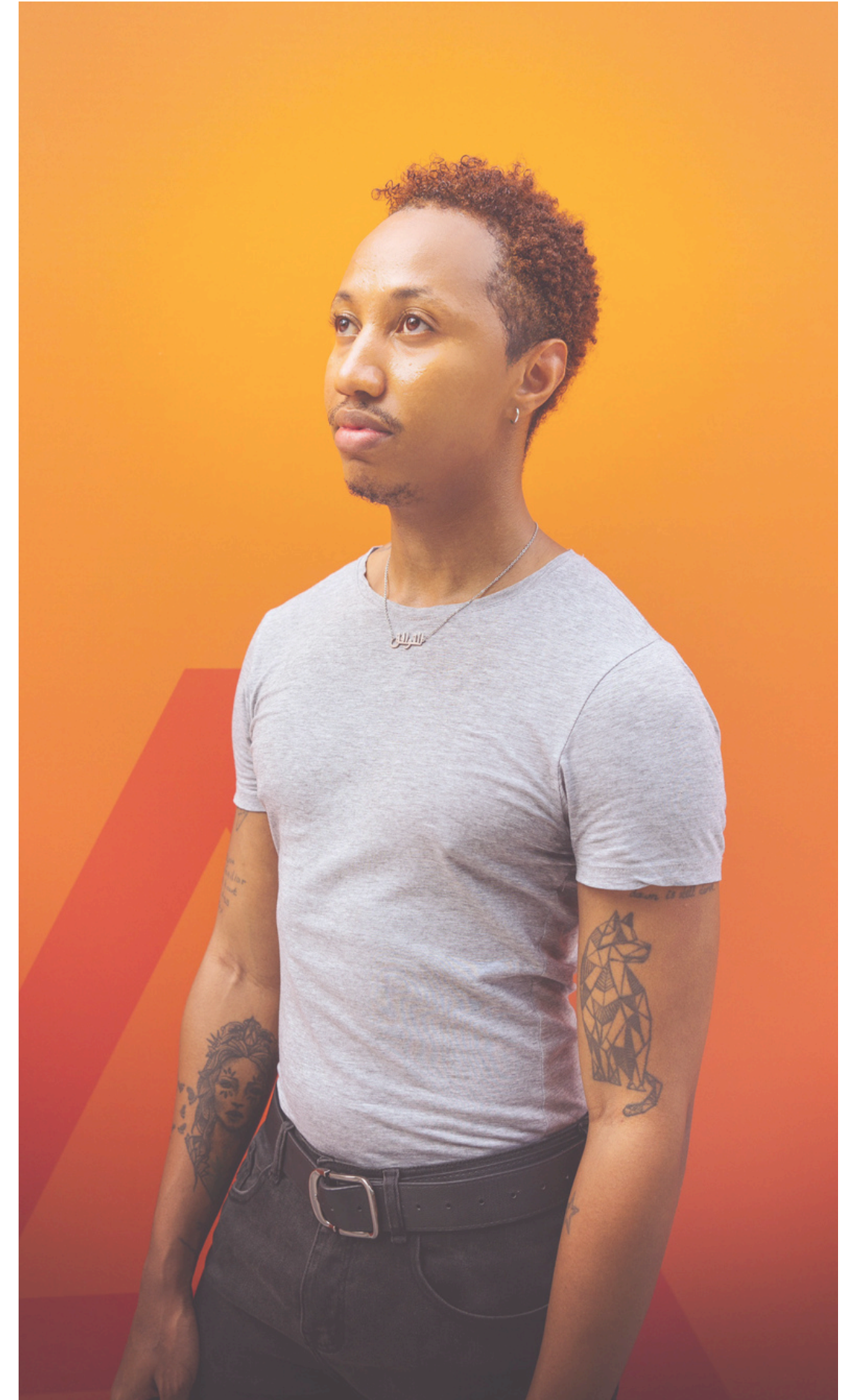
- Artist Statement
- Lighthouse
- Ode To Black Women.
- FAQ
- Media
- Links
- Contact

# Artist Statement

“You’re doing a really good ting Nay-tan.” Words from my 92 year old Jamaican grandma after I interviewed her for my visual poetry/mini documentary film based on my poem ‘Ode To Black Women’. That enduring accent still thick and intact after 62 years of living in the UK, a true reflection of my Grandmothers strength, pride and resilience. It resonates through my creative endeavors and is a trait I hope to continue to apply to the creation of my art.

My name is Nathaniel Lloyd Richards I am the only boy of five siblings, the son of two Caribbean immigrants. My father from Jamaica and my mother from the tiny country of St Kitts and Nevis. Both my parents struggled adjusting into the UK and initially were only offered manual labour jobs while experiencing extreme poverty and racism I’m sure they only told me the half of. My father is no longer with us but my mother (now retired) enjoyed a successful career as a Mental Health professional. My parent’s struggle and triumph in the face of adversity, navigating a new life in the UK, I feel add depth to my narrative. Their experiences, though challenging, have contributed to the mosaic of influences that inform my art. I have embraced and woven these diverse elements into my work, creating a reflection of my heritage and the broader human experience.

I have always been inspired by my surroundings, growing up in Manchester our community was a melting pot of cultures and ethnicities, an inner-city mish-mash of beautiful diversity. My household however was quintessentially Caribbean. From the food to the constant sounds of reggae, dancehall and Soca to the language used that, charmingly rough patois. Our culture was imbedded into the structure of the many houses we lived in. This is most blindingly evident in my poetry. My childhood experiences not only shape how I choose to live in the world, they seep into my writing, the language, the stories, the humour. The rich tapestry of my cultural background, rooted in the Caribbean but flourishing in the diverse community of Manchester, has undeniably shaped my artistic expression. cont...



# Artist Statement - Cont'd

For a long time my family have been the biggest supporters of me pursuing my creative passions and I don't take it lightly. This is because I don't come from a creative family, nobody in the family studied the arts or is an artist so to still have that support means everything to me even if sometimes they may not completely 'get it.'

Recently I was told (I hadn't asked) that I should choose one of my talents to focus on and I was taken aback by the sentiment. I have definitely shunned this idea that we need to as artists stick to one thing we are good at. I certainly identify as a multifaceted artist — a poet, singer/songwriter, music producer, director, and curator — who demonstrates a holistic approach to creativity. The fusion of my talents reflects the dynamic and ever-changing nature of art. By refusing to adhere to the notion of specialising in one area, I am embracing the freedom to explore and express myself across various mediums. I enjoy joining my talents together to create art and just like my dear Grandma this is something I refuse to change, art is never just one thing it is ever changing. I will continue to draw inspiration from my roots, to celebrate the beauty of diversity, and let my art be a reflection of the rich tapestry of my life.



# Lighthouse



'Lighthouse' is nominated for the Forward Prizes for Poetry

"An experience I can't put into words. All I know is that every person out there who needs comfort without coddling, a kind heart without patronising tones, hope without delusion - needs to read it!"

**Rebecca Kenny, EIC Written Off Publishing**

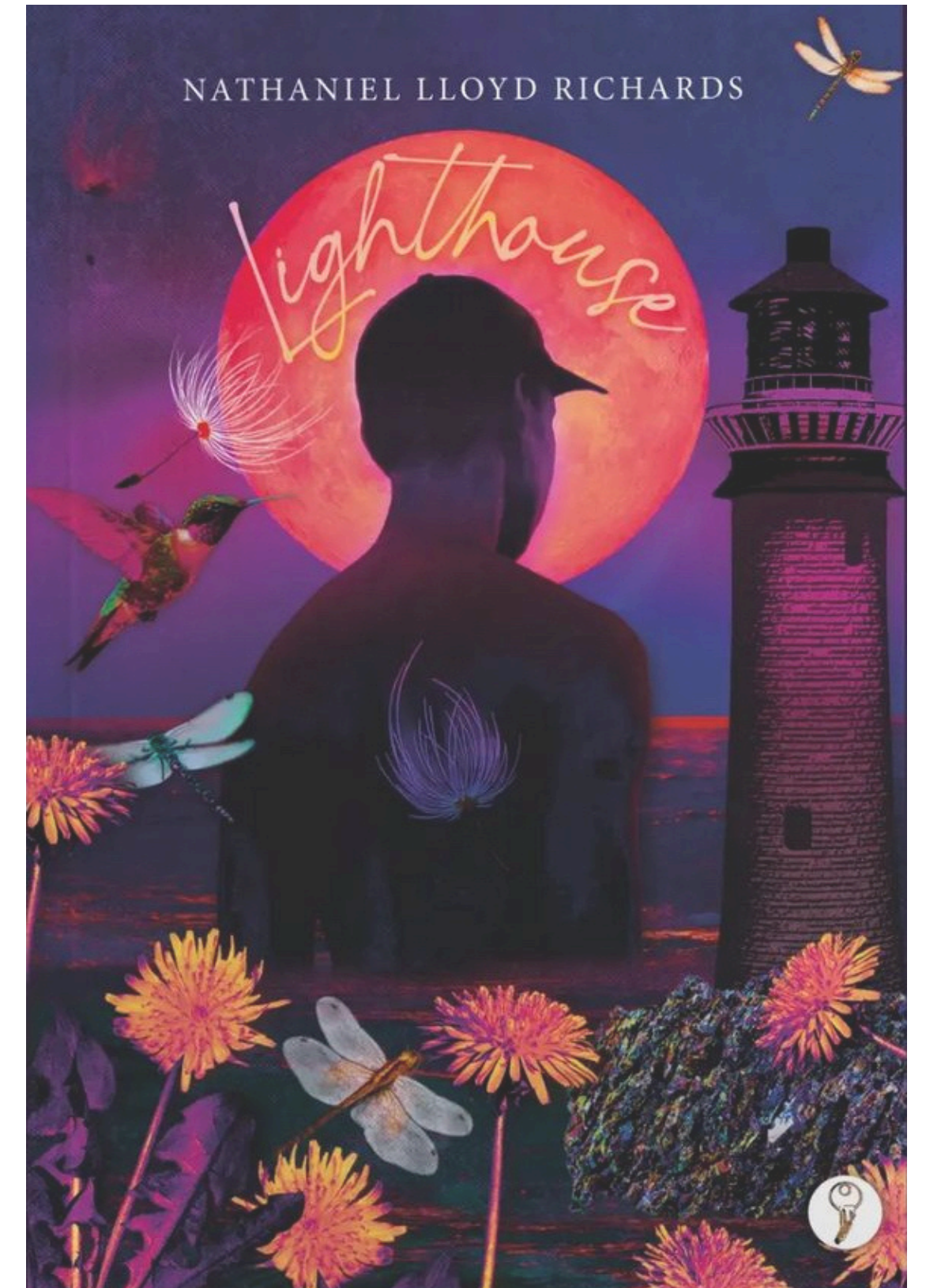
When I set out to create "Lighthouse," I wanted to weave a tapestry of my innermost thoughts, experiences, and reflections—a journey that would not only resonate with readers but also serve as a beacon of hope in a world too often shrouded in darkness.

Each poem in "Lighthouse" is a piece of my soul laid bare—a testament to the deeply personal nature of this collection. I delve into the depths of my own struggles with mental health, laying bare the raw emotions and vulnerabilities that accompany such battles. Through my words, I hope to offer solace and understanding to those who may be navigating similar terrain, reminding them that they are not alone.

But "Lighthouse" is not merely a catalog of personal woes; it is a rallying cry against the injustices that pervade our society. I confront issues of social injustice head-on, using poetry as a tool for advocacy and empowerment. From systemic inequities to the marginalisation of minority communities, I refuse to shy away from the uncomfortable truths that demand our attention and action.

Grief, too, finds its place within the pages of "Lighthouse." I explore the intricacies of loss—the profound ache of absence, the bittersweet memories that linger, and the slow journey toward healing. Through my poetry, I seek to honour the complexities of grief while offering a glimmer of hope to those who mourn.

Above all, "Lighthouse" is a testament to the enduring power of hope. In the face of adversity, I refuse to surrender to despair. Instead, I choose to believe in the possibility of a brighter tomorrow—a tomorrow shaped by resilience, compassion, and unwavering optimism. My poetry serves as a guiding light, illuminating the path toward a future filled with promise and possibility.



# Lighthouse





## ODE TO Black Women.

'Ode To Black Women.' is a poignant mini-documentary directed by Nathaniel Lloyd Richards, inspired by his powerful poem "Ode to Black Women." Set against the backdrop of the vibrant city of Manchester, the film intimately captures the stories of 5 remarkable black women as well as an extended cast ranging from 19 to 92 years old.

The documentary unfolds as a mosaic of experiences, each woman sharing personal narratives that echo strength, resilience, and empowerment. It beautifully weaves together tales of triumph over adversity, including a courageous battle against breast cancer, through diagnosis, double mastectomy, and the empowering choice to embrace her body as it is.

A story about a mother of two who contracted COVID-19 while nine months pregnant adds a poignant layer to 'Ode to Black Women.' This particular narrative not only reflects the challenges posed by the global pandemic but also underscores the resilience and strength of black women in the face of adversity. The details of the mother being in a coma for six weeks, giving birth while in that state, and subsequently fighting her way back to normalcy are undoubtedly powerful.

The film takes a closer look at the intersectionality of these women's lives, delving into the challenges faced by those who chose to leave abusive relationships while navigating the complexities of motherhood. Their stories highlight the indomitable spirit that transcends generational boundaries, reinforcing the theme of unity and support within the black women community.

A particularly moving segment features the insightful perspective of a 92-year-old grandmother who shares her journey from Jamaica to Manchester in the 1960s. Her narrative provides a historical context, shedding light on the resilience and determination that defined the migration experience during that era.

'Ode to Black Women.' not only serves as a celebration of black womanhood but also as a tribute to the diverse narratives within the community. The film captures the essence of strength, sisterhood, and the collective power that emerges when women share their stories. Through a visually compelling lens, the documentary invites audiences to connect with the universal themes of perseverance and empowerment, leaving a lasting impression that transcends age, culture, and circumstance.

A DOCUMENTARY BY  
NATHANIEL LLOYD RICHARDS



ODE TO  
**Black Women.**



NATHANIEL LLOYD RICHARDS PRESENTS 'ODE TO BLACK WOMEN.' MUSIC & POEM BY NATHANIEL LLOYD RICHARDS  
VIDEO EDITOR FENG YUZE CINEMATOGRAPHY BY KEVIN PAUL LAWRENCE  
DIRECTED BY NATHANIEL LLOYD RICHARDS



# ODE TO Black Women.



# #Odetoblackwomen



# FAQ

## **1. What is the film about?**

- 'Ode To Black Women.' is a brief yet powerful documentary highlighting the resilience of remarkable women. From a saxophonist overcoming breast cancer to a pregnant survivor of COVID-19, an artist breaking free from abuse, and a Jamaican grandmother recounting her journey to England in the 1960s, this film beautifully weaves together diverse stories of strength and triumph.

## **2. Where and when was the film filmed?**

- The film was filmed in Manchester, UK in January 2024 (with additional scenes shot in Shenzhen, China.)

## **3. What inspired the creation of the film?**

- The film 'Ode To Black Women.' was inspired by the profound desire to amplify the often overlooked stories of resilience, triumph, and unyielding strength within the diverse experiences of black women, drawing inspiration from their unique narratives as a source of empowerment and celebration.

## **4. How did the project come together?**

- Starting as a heartfelt poem, 'Ode To Black Women.' evolved into a visual journey— from a photoshoot capturing essence to a mini documentary. The process involved assembling a talented team, reaching out to inspiring women, conducting heartfelt interviews, and scouting locations, weaving together a tapestry of resilience and strength.

## **5. What makes this film unique or different?**

- What sets 'Ode To Black Women.' apart is its unique fusion of poetic inspiration, visual storytelling, and the intimate narratives of extraordinary women, creating a compelling and distinctive celebration of resilience and empowerment.

## **6. What challenges did the you face during production?**

- Despite facing financial challenges and being entirely self-funded, the creation of 'Ode To Black Women.' persevered, a testament to the unwavering commitment to amplify the powerful stories of black women and showcase their resilience in the face of adversity.

## **7. What genre does the film belong to?**

- Short documentary (13:56 minutes)

# Media

[Canvas Rebel Interview](#)

[Outside Radio Podcast interview](#)

[Muleskinner Journal - Leagacy Journal 2 - Words by Nathaniel Lloyd Richards](#)

# ODE TO Black Women.

## Links



**Official Youtube Page**



**Official Vimeo Link To Full Film**

Password - Lighthouse

*Lighthouse*

**Link**

**Lighthouse**

**Find Me On Social Media Or  
Contact Me.**

## **Contact**

nathaniellloydrichards@gmail.com

[www.nathaniellloydrichards.com](http://www.nathaniellloydrichards.com)



[naeuk](#)

[nathaniellloydrichards](#)

